

# STONETEK

## COVERMENT

— Cement tiles —



# WALL/FLOOR

# WALL

## PLANK



Steel Cement



Zero



\*Steel Cement

Dimensions: 7 7/8" x 47 1/4"

Thickness: 3/4"

Finish: honed

\* porous

## LARGE FORMAT



Zero



Ivory



Dark Grey

Dimensions: 23 5/8" x 47 1/4"

Thickness: 3/4"

Finish: honed

## DUNES



Ivory



Grey

Dimensions: 19" x 30 1/8"

Thickness: 5/8" - 1 3/4"

Finish: honed/relief

## CAMAGUAN



Zero

Dimensions: 7 7/8" x 47 1/4"

Thickness: 1/2"

Finish: grooved

## BOLTED



Zero

Dimensions: 23 5/8" x 47 1/4"

Thickness: 3/4"

Finish: honed

## WHAT IS IT?

It is an artisanal cement tile mixed with fibers and additives that gives the resistance, durability and color necessary for a long lasting look. It is a traditional and original finish that brings a modern cement appearance in an easy, fast and economic way to achieve.

## PRODUCT FEATURES:

1. Big dimension tiles.
2. Low density, lighter material with low heat transmission.
3. Low absorption, less than 5%.
4. Color doesn't fade.
5. High compression resistant.

# COVERMENT

## Cement tiles

### USES:

1. Flooring and walls, depending on the style.
2. Material is suitable for new construction or remodeling.
3. Appropriate for residential or commercial use.
4. Could be installed indoors or outdoors.
5. Accent walls.



Big dimensions



Natural cement finish

### INSTALLATION:

Installation can be performed using latex modified thin set, following the manufacturer recommendations for size and weight of the tiles.

Clean immediately during installation to avoid adherences of mortar to the surface.

CoverMENT can be cut with a diamond blade saw.



Indoors or outdoors

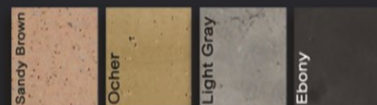


Trendy cement finish

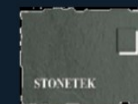
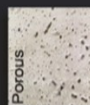


AVAILABLE IN OTHER COLORS AND TEXTURES UPON SPECIAL REQUEST

#### COLORS:



#### FINISH:



Beauty in every design.

# WALL

## DUNES



**IVORY**



**GREY**

Dimensions: 19"x 30 1/8"

Thickness: 5/8" - 1 3/4"

Finish: honed/ relief

# WALL

## BOLTED



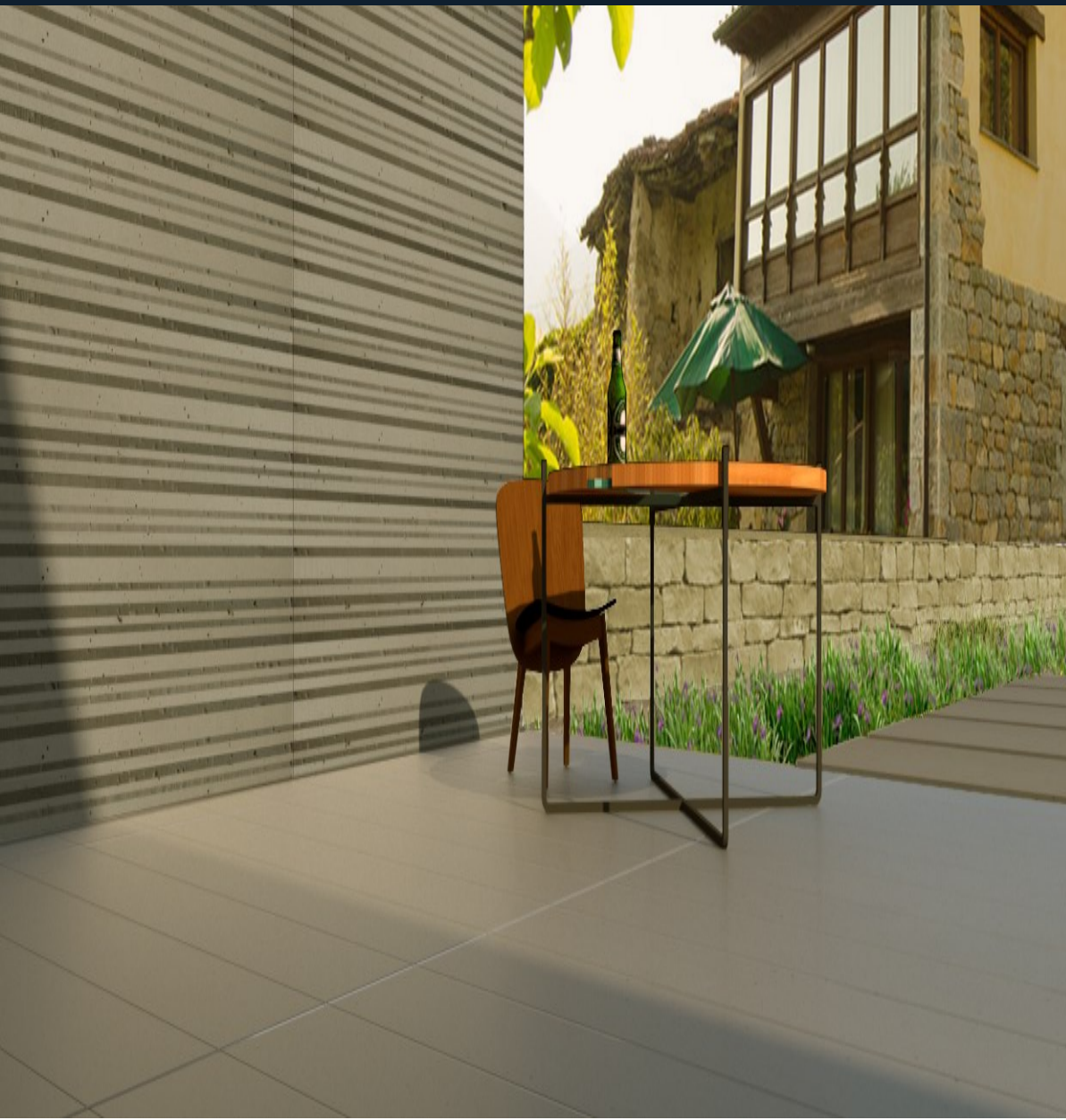
**ZERO**

Dimensions: 23 5/8" x 47 1/4"  
Thickness: 3/4"  
Finish: honed



# WALL

## CAMAGUAN (SPECIAL ORDER)



**ZERO**

Dimensions: 7 7/8" x 47 1/4"

Thickness: 1/2"

Finish: grooved.

# WALL / FLOOR

## PLANK



**STEEL CEMENT**



**ZERO**



**\*STEEL CEMENT**

Dimensions: 7 7/8" x 47 1/4"

Thickness: 3/4"

Finish: honed

\* Porous



# WALL / FLOOR

## LARGE FORMAT



**IVORY**



**DARK  
GREY**



**ZERO**

Dimensions: 23 5/8" x 47 1/4"  
Thickness: 3/4"  
Finish: honed

Bolted Zero



Large Format Dark Grey



Dunes Grey



Dunes Ivory



Large Format Zero



Plank Steel Cement





# STONETEK

1583 NW 159TH ST.  
Miami Gardens, FL 33169  
P 954-674-8745  
[info@stonetek.us](mailto:info@stonetek.us)  
[www.stonetek.us](http://www.stonetek.us)