

STONETEK

ULTRASTONE

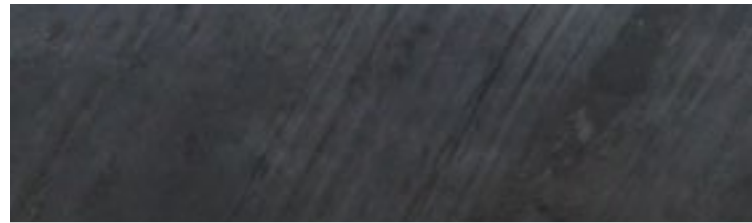
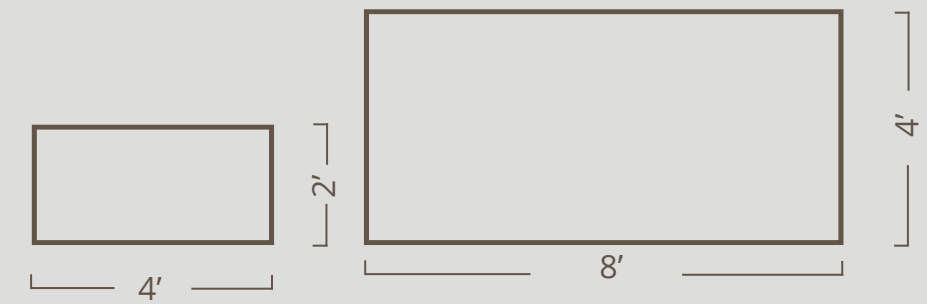
— COLLECTION —



COLORS

PANEL DIMENSIONS

THICKNESS: 1/16 - 1/8" (2X4' & MAXI)
1/8 - 1/4" (LUX 2x4')



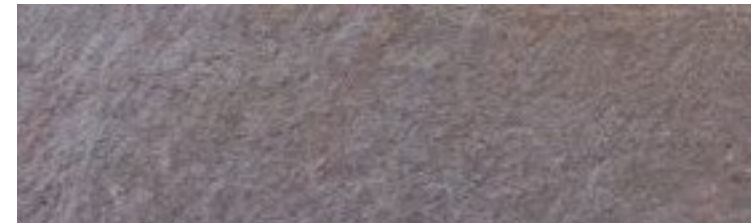
OCEAN BLACK



DEOLI



JEERA GREEN



COPPER



INDIAN AUTUMN



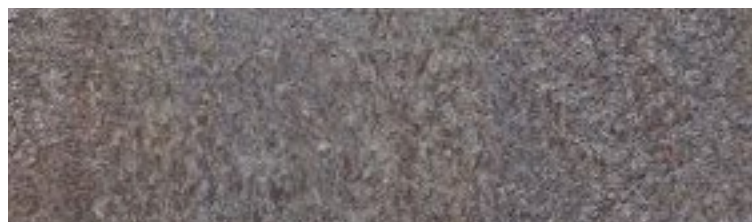
SILVER SHINE



OCEAN



STEEL GREY



GOLDEN



SHINE COPPER



AUTUMN CREAM



BLACK SHIMMER



MULTI COLOR



GREY BEAUTY



FOREST FIRE

SPECS

COLOR	OCEAN BLACK	DEOLI	JEERA GREEN	COPPER	INDIAN AUTUMN	SILVER SHINE	OCEAN	STEEL GREY	GOLDEN
SIZE (FT.)	2 X 4, 4 X 8, LUX	2 X 4, 4 X 8, LUX	2 X 4, 4 X 8, LUX	2 X 4, 4 X 8, LUX	2 X 4, 4 X 8, LUX	2 X 4, 4 X 8, LUX	2 X 4, 4 X 8, LUX	2 X 4	2 X 4
COLOR	SINE COPPER	AUTUMN CREAM	BLACK SHIMMER	MULTI COLOR	GREY BEAUTY	FOREST FIRE			
SIZE (FT.)	2 X 4, 4 X 8	2 X 4	2 X 4	2 X 4	2 X 4	2 X 4			

Natural stone varies in color, tones, markings and texture due to its geological composition, samples can only give a reflection or idea of the formation, veins and texture. Any variations must be accepted as inherent features of all natural stones.

GENERAL INFO

DESCRIPTION:

ULTRASTONE Veneer is a flexible veneer laminated to a fiberglass and polyester resin substrate, made of a thin layer of real stone, slate or quartzite. This innovative product can be applied over concrete, ceramic, wood, metal, plywood, fiberglass, backer board, tile, dry wall, MDF, HPL, cabinetry and many other surfaces. Natural Stone Veneer has been tested as a covering veneer in many different environments, proving to be an excellent material when a real stone finish is desired, but heavy solid stone might not be practical. ULTRASTONE is suitable for both, indoors and outdoors.

SUGGESTED APPLICATIONS:

Interiors and exteriors, walls, furniture, kitchen or closet cabinets, doors, ceilings, limited weight applications in boats, airplanes, cars, elevators, round columns, lobbies, and any place your imagination can think of.

INSTALLATION TIPS:

Application of Ultrastone can be performed using basic tools, traditionally used to install tiles. **CUTTING:** Cutting straight lines and curves is best done using long nosed tin snips. Ultrastone can also be cut with a metal shear, wet saw, or table saw with carbide or diamond blade.

SEALERS:

It is best to pre-seal Ultrastone sheets prior to the installation. This protects and seals the face from adhesives and grout during application and handling. Ultrastone can be sealed with the same sealers used for stone.

ADHESIVES:

Use the proper adhesive following the manufacturer's instructions according to the substrate to be applied. Examples: Acrylic copolymer, Polyurethane wood glues, PU construction grade adhesives, highly modified thin-set, Epoxy, Construction grade multi-purpose adhesive, latex modified thin set.

COLORS:

Since Ultrastone is a product of nature, color and texture variances are inherent to each particular stone and part of the natural beauty of quarried materials. Ultrastone can't be guaranteed to match dye-lot to dye-lot. We present 15 colors out of a great range of more than 22 available. For larger projects we can supply with a time frame a matching lot from same quarrying to facilitate the installation.

SIZES:

2 x 4' | 1/16" - 1/8"

MAXI: 4 x 8' (selected colors) | 1/16" - 1/8"

Translucent sheets of 2 x 4' LUX (selected colors) | 1/8" - 1/4"

LUX:

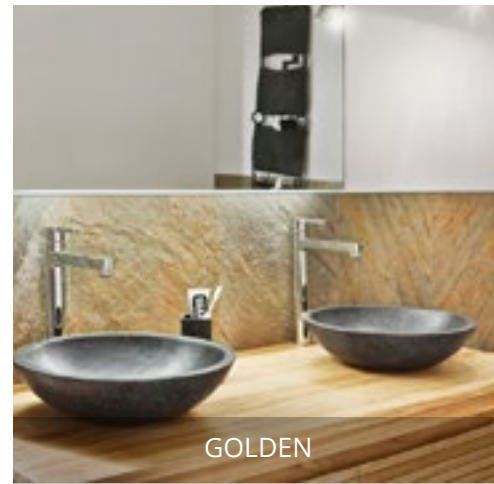
The LUX series is a veneer with an acrylic translucent backing which allows the light go through from the back for an impressive and unique effect. This presentation is more rigid than the other, for easier framing and installation. Ideal to be used in accent walls with a backlight that will enhance and produce indirect light through the natural stone structure and color.



SHIMMER BLACK



SILVER GREY



GOLDEN



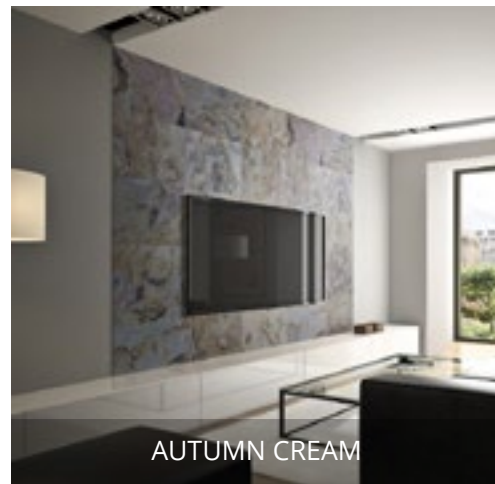
OCEAN BLACK



AUTUMN CREAM



BLACK BEAUTY



AUTUMN CREAM



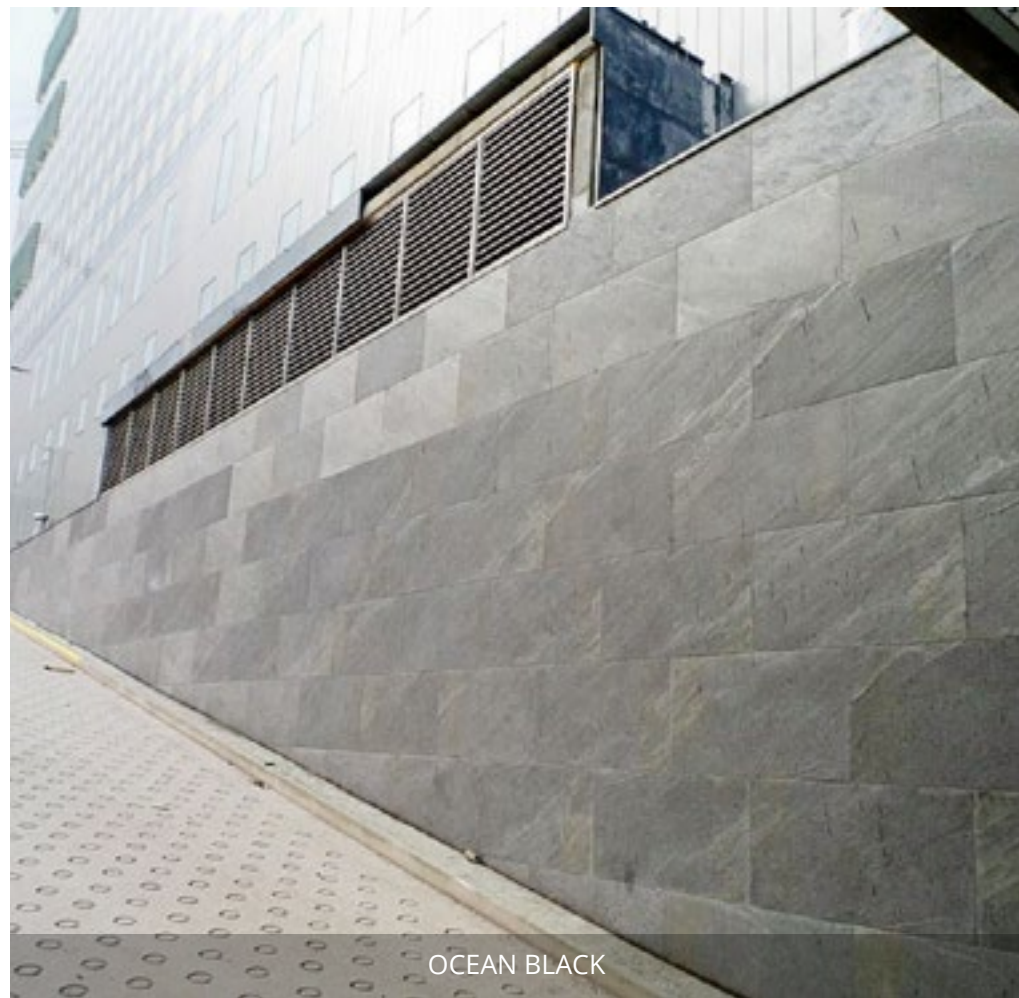
INDI



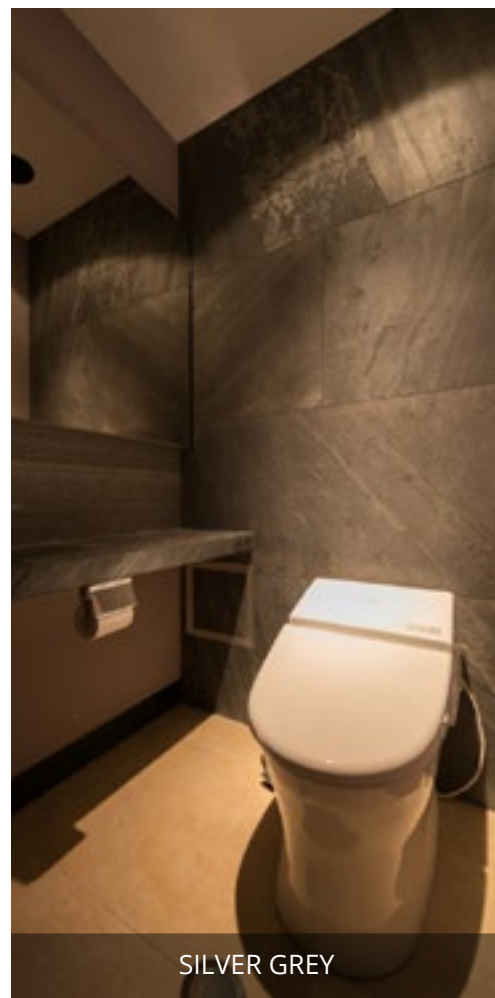
GOLDEN



COPPPER (LUX)



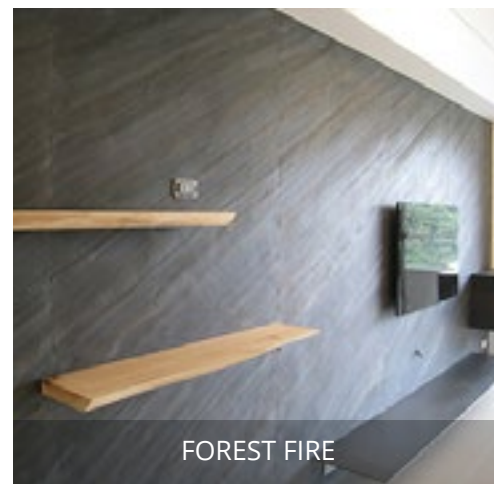
OCEAN BLACK



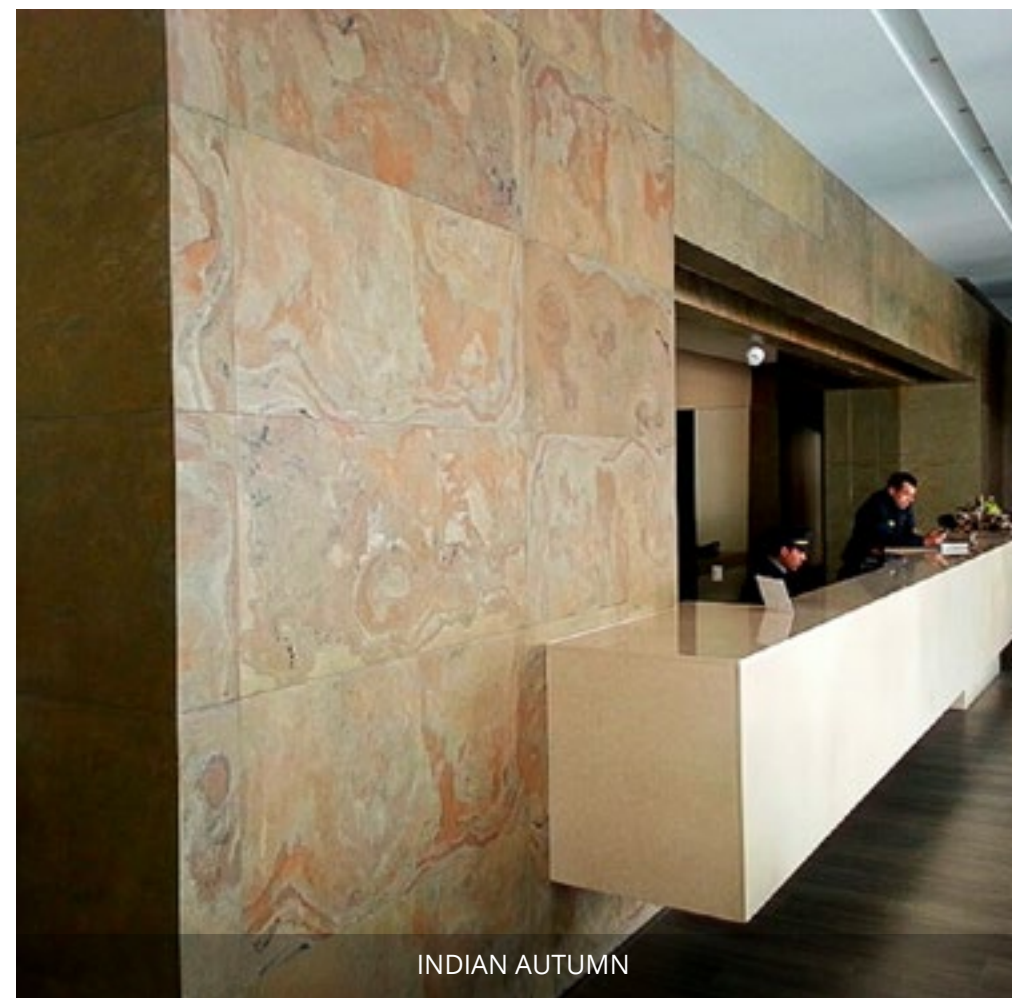
SILVER GREY



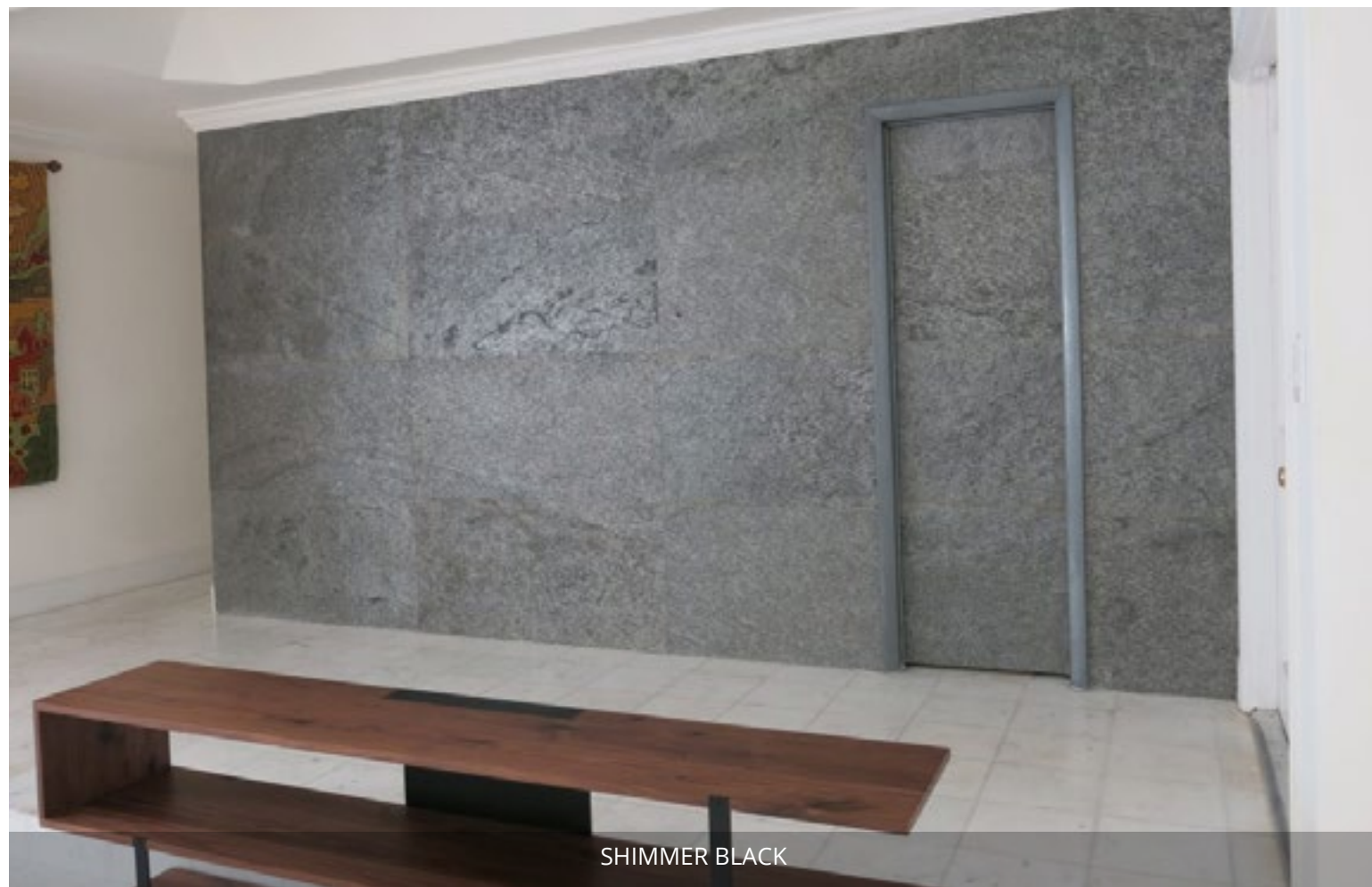
GOLDEN



FOREST FIRE



INDIAN AUTUMN



SHIMMER BLACK



SILVER SHINE



(GOLDEN ULTRASTONE)

STONETEK

1583 NW 159TH ST Miami Gardens, FL, 33169

(954) 964-7606

info@stonetek.us

WWW.STONETEK.US