

ecover

ECOLOGICAL WALL VENEER



Innovative, Ecological, Flexible Wall Cladding

GENERAL INFO

ECOVer is a new high-tech ecological wall veneer made of inorganic clay and natural components.

It is a modern and versatile material designed to cover from small to large areas and to create contemporary decorations bringing aesthetical results but at the same time completely functional and without harming the environment.

Widely used in new and old building exterior walls, such as high-rise residential buildings, schools, gyms, hospitals, halls, pavilions, courtyards, hotels, and areas with limited weight as boats, airplanes and so on.



FEATURES

Lightweight/ Energy Saving

It makes easy transport and fast installation. Due to its thermic properties, the heat transmission is reduced.

Fire Retardant

Reduces fire effectively due to its high refractory components

Water Resistant

Surface is treated with water resistant product.

Durable

Non-fragile, abrasion resistant, tested for long cycles and high stability freeze-thaw cycling.

Non-Pollutant

It is a recyclable and ecological product made only with natural aggregates.

Flexible

The flexibility of ECOVER allows for curvature installations.

Low Cost

Economical choice due to lower freight, storage, and installation costs.

Different Textures Options

Multiple surface options that have true natural texture and feel.

Rock Slate



ALPS

YELLOW STONE

Specs:

Model	Color	Size (in)	Thickness (in)	Pcs/Box	Sqf/box	Weight lb/sqf
Rock Slate	Alps	11x23	1/8	36	63	0.70
	Yellowstone	11x23	1/8	36	63	0.70

Travertine



SILVER

CLASSIC

Specs:

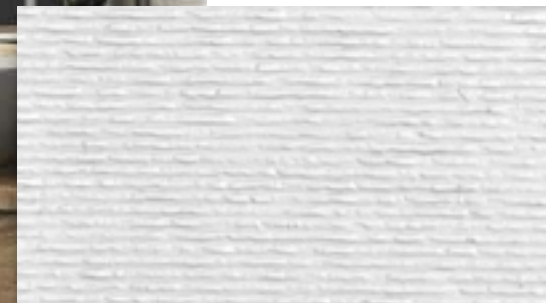
Model	Color	Size (in)	Thickness (in)	Pcs/Box	Sqf/box	Weight lb/sqf
Travertine	Silver	11x23	1/8	32	56	0.75
	Classic	11x23	1/8	32	56	0.75



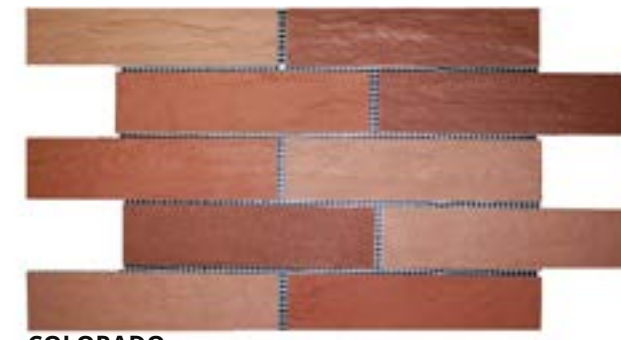
MISSISSIPPI



HUDSON



WHITE RIVER



COLORADO

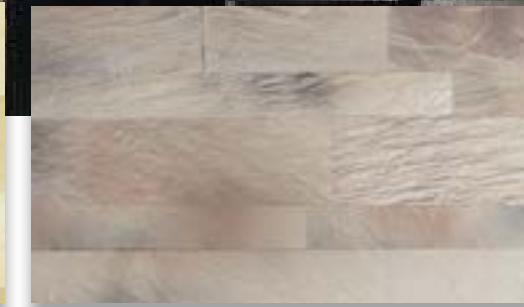
Specs:

Model	Color	Size (in)	Thickness (in)	Pcs/Box	Sqf/box	Weight lb/sqf
Flow	Mississippi	11x23	1/8	28	49	0.75
	Hudson	11x23	1/8	28	49	0.75
	White River	22x44	1/8	20	135	0.75

Specs:

Model	Color	Size (in)	Thickness (in)	Pcs/Box	Sqf/box	Weight lb/sqf
Brick on mesh	Colorado	11x23	1/8	42	62	0.55

Mix



DUNES

NIAGARA

WHITE SANDS

Specs:

Model	Color	Size (in)	Thickness (in)	Pcs/Box	Sqf/box	Weight lb/sqf
Mix 01	White Sands	2 & 4 x 23	1/8	160	55	0.7
	Niagara	2 & 4 x 23	1/8	120	44	0.9
	Dunes	2 & 4 x 23	1/8	150	55	1

Granite

Wood



GUAYANA



BIRCH



WHITE OAK

Specs:

Model	Color	Size (in)	Thickness (in)	Pcs/Box	Sqf/box	Weight lb/sqf
Granite	Guayana	11x23	1/8	24	42	0.75

Specs:

Model	Color	Size (in)	Thickness (in)	Pcs/Box	Sqf/box	Weight lb/sqf
Wood	White Oak	7 1/2x38 1/2	1/8	20	40	0.75
	Birch	7 1/2x38 1/2	1/8	20	40	0.75

Rough Concrete



GREY

Wave Concrete



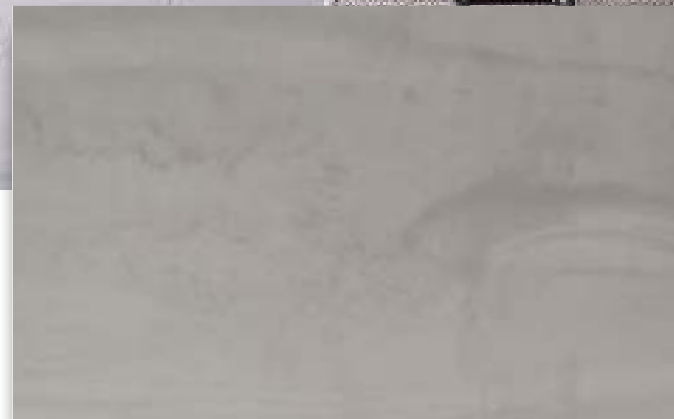
GREY

Specs:

Model	Color	Size (in)	Thickness (in)	Pcs/Box	Sqf/box	Weight lb/sqf
Rough Concrete	Grey	47 1/4 x 23 5/8	1/8-1/4	10	77.5	1.5

Specs:

Model	Color	Size (in)	Thickness (in)	Pcs/Box	Sqf/box	Weight lb/sqf
Wave Concrete	Grey	47 1/4 x 21	1/8-3/8	8	54.77	1.9



GREY

Specs:

Model	Color	Size (in)	Thickness (in)	Pcs/Box	Sqf/box	Weight lb/sqf
Plain hhConcrete	Grey	47 1/4 x 23 5/8	1/8-1/4	10	77.5	1.5



BLACK

WHITE

Specs:

Model	Color	Size (in)	Thickness (in)	Pcs/Box	Sqf/box	Weight lb/sqf
Feng Shui	Black	47 1/4 x 23 5/8	1/8-1/4	7	54.25	1.5
	White	47 1/4 x 23 5/8	1/8-1/4	7	54.25	1.5

Ministrip



BLACK



WHITE

Specs:

Model	Color	Size (in)	Thickness (in)	Pcs/Box	Sqf/box	Weight lb/sqf
Ministrip	Black	47 1/4 x 23 5/8	1/8-1/4	7	54.25	1.5
	White	47 1/4 x 23 5/8	1/8-1/4	7	54.25	1.5

INSTALLATION

ECOver installation is identical as installing a regular tile.

1. Prepare the Surface:

Make sure your surfaces are clean (free of dust and grease), smooth and dry. For outdoors is recommended to treat the wall with water-proofing products as will normally use for any other material.

2. The wall should be flat:

ECOver is flexible and will follow the wall structure.

3. Decide your Layout and use a level to mark your start line.

4. Use a Multipurpose thin set or Latex modified thin set products:

According to the conditions and type of substrate you will install ECOver, we recommend Mapei, Laticrete, Custom, Proflex, etc. Follow the adhesive manufacturer instructions.

5. Use a ¼ notch to apply the adhesive:

You can apply it to the wall or to each tile, use full coverage to assure a sound installation.

6. Start setting your tiles.

7. Use Grouting joints:

Specially for outdoors installation to avoid water coming through the joints. Use an appropriate grout for thin grout and apply as suggested. To avoid excess of grout on irregular surface designs, use a grout bag to apply. On flat designs can be applied as regular for tiles. In interior applications there is no need for grout joints.

8. Use a scrapper to remove the exceeded grout:

Just when it is half dry.

9. Use a dry sponge to clean up dirty blots.

10. For corners, see video for reference:

Use a grinder to slightly grind the back edge and place accordingly to get a close joint. Use a similar color grout to retouch and have a smooth edge.

APPLICATIONS

ECOver is a versatile decorative veneer that has many uses and can be used in many areas. Here are just some examples of areas and spaces that ECOver can be applied to.

- **Residential:** walls, furniture, kitchens, closets, cabinets, doors and ceilings.
- **Limited weight areas:** boats, airplanes, cars and elevators.
- **Commercial:** hotels, restaurants, gyms and building facades





Commercial exterior walls: **Classic Travertine**



Commercial accent walls: **Grey Rough Concrete**



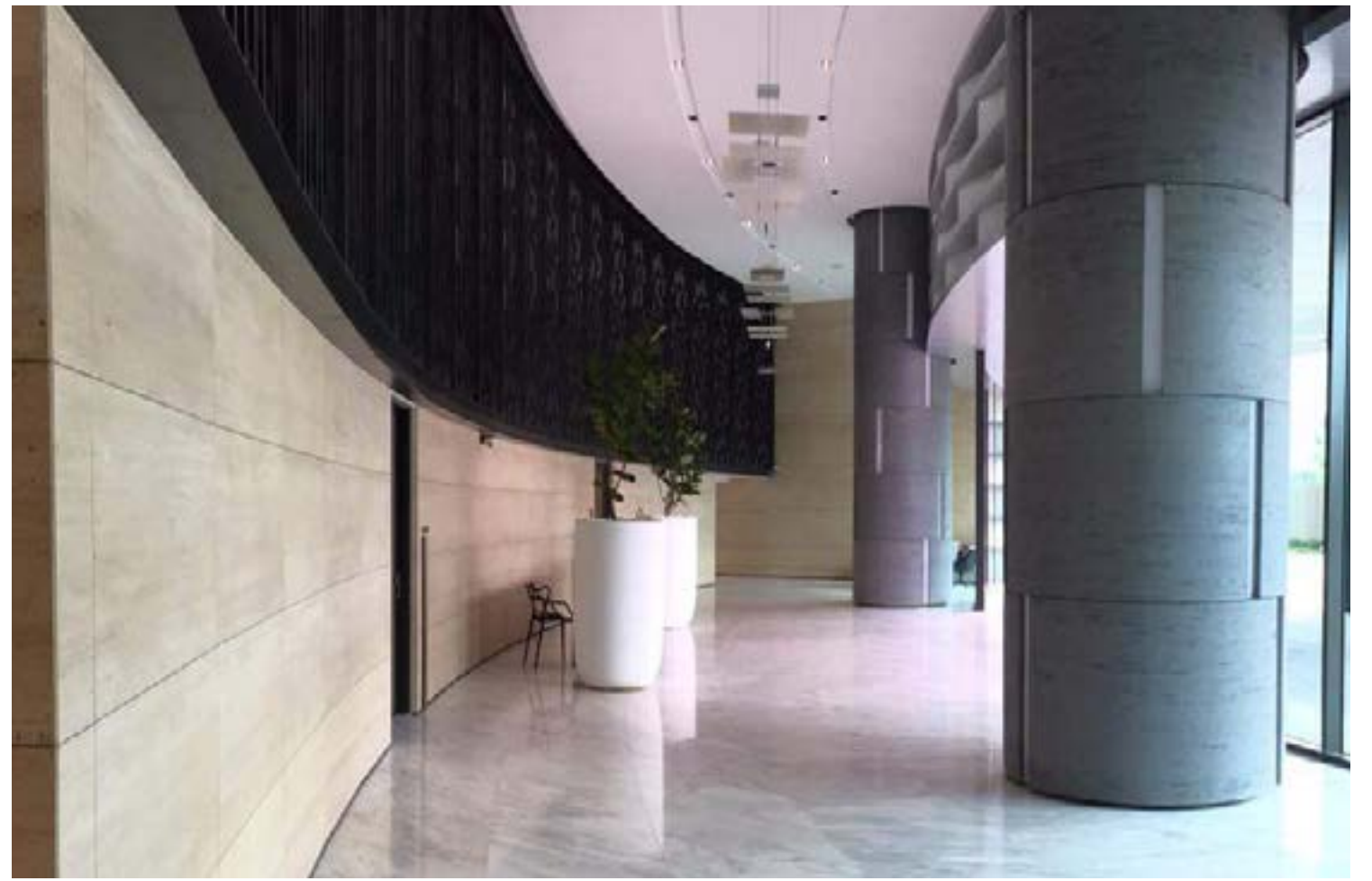
Patio walls: **Alps Rock Slate**



Bathroom walls: **Mississippi Flow**



House Facade: **Classic Travertine**



Hotel Lobby, Round Columns: **Silver Travertine**



Bathroom walls: **White River Flow**



Interior Accent Wall: **YellowStone Rock Slate**



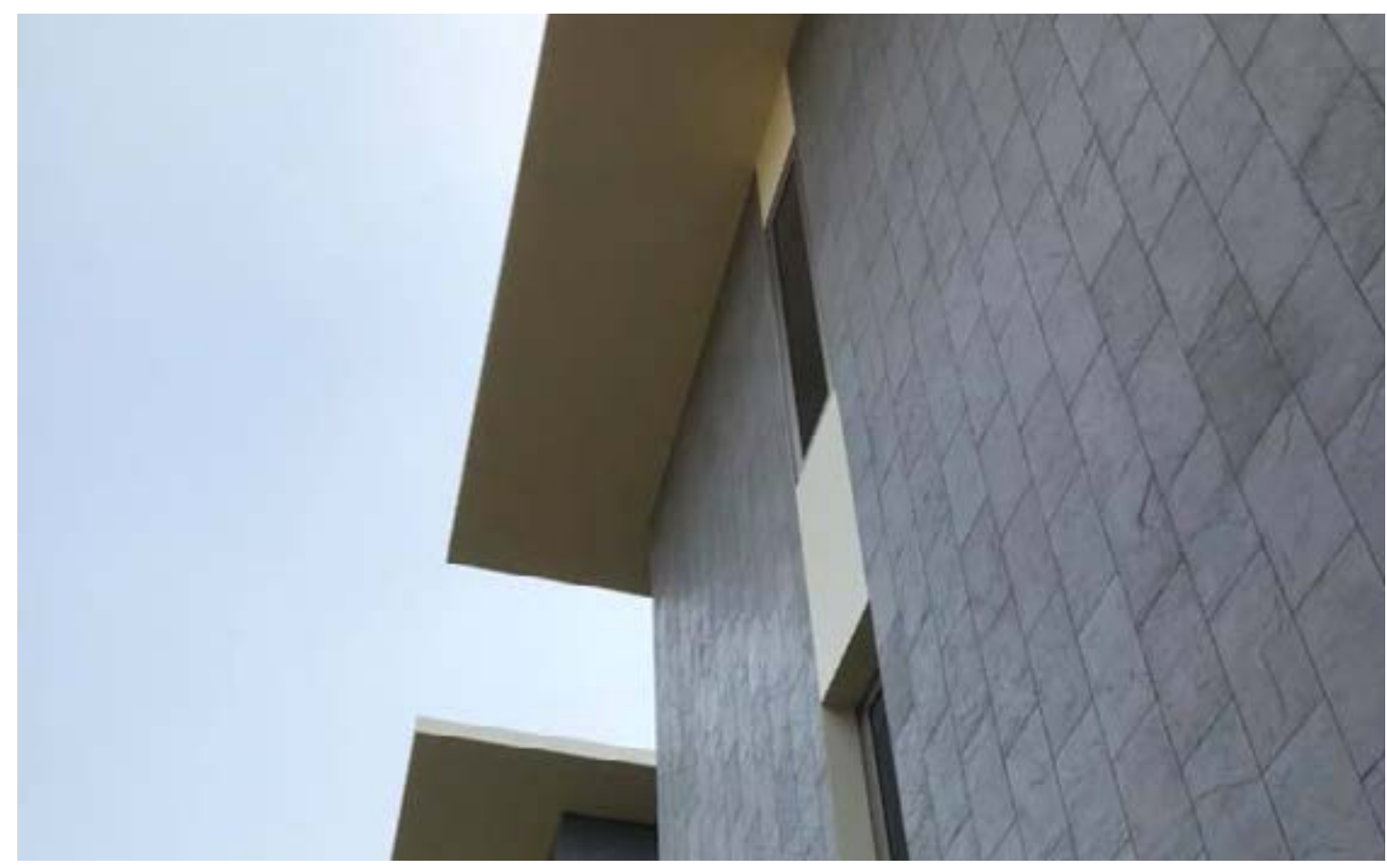
Master Bathroom Decoration: **Mississippi Flow**



Commercial Decoration: **Grey Rough Concrete**



Interior TV Wall: **Grey Rough Concrete**



Facade Wall: **Alps Rock Slate**



Commercial Facade, Mix of textures: **Black Ministrip & Black Feng Shui**



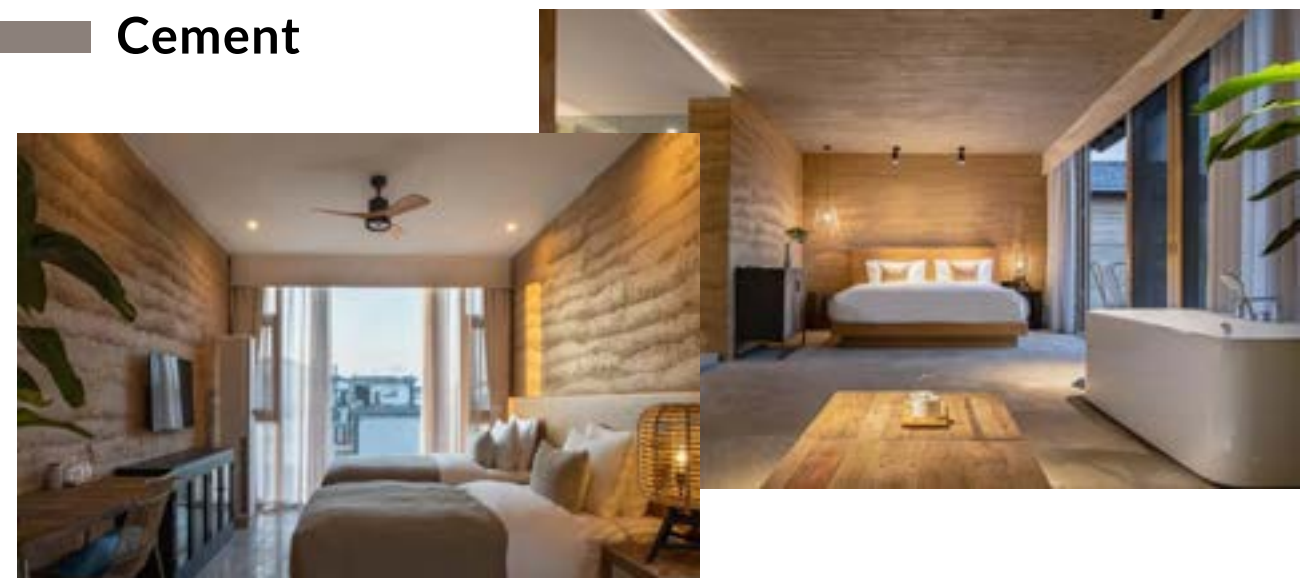
Exterior Wall: **Yellow Stone Rock Slate**

SPECIAL ORDERS

Rattan



Cement



COLOR OPTIONS

You can make unique designs by customizing your product, pick a texture of a material you like as ratten, cement, stone, wood, brick and add it some color to it.





ecover

Distributed By Stonetek LLC

Address: 1583 NW 159TH St, Miami Gardens, FL 33169

Phone: (954) 964 7606

Email: info@stonetek.us

Website: www.stonetek.us