



STONETEK

Seamless Panels Bamboo Fiber with PVC Film



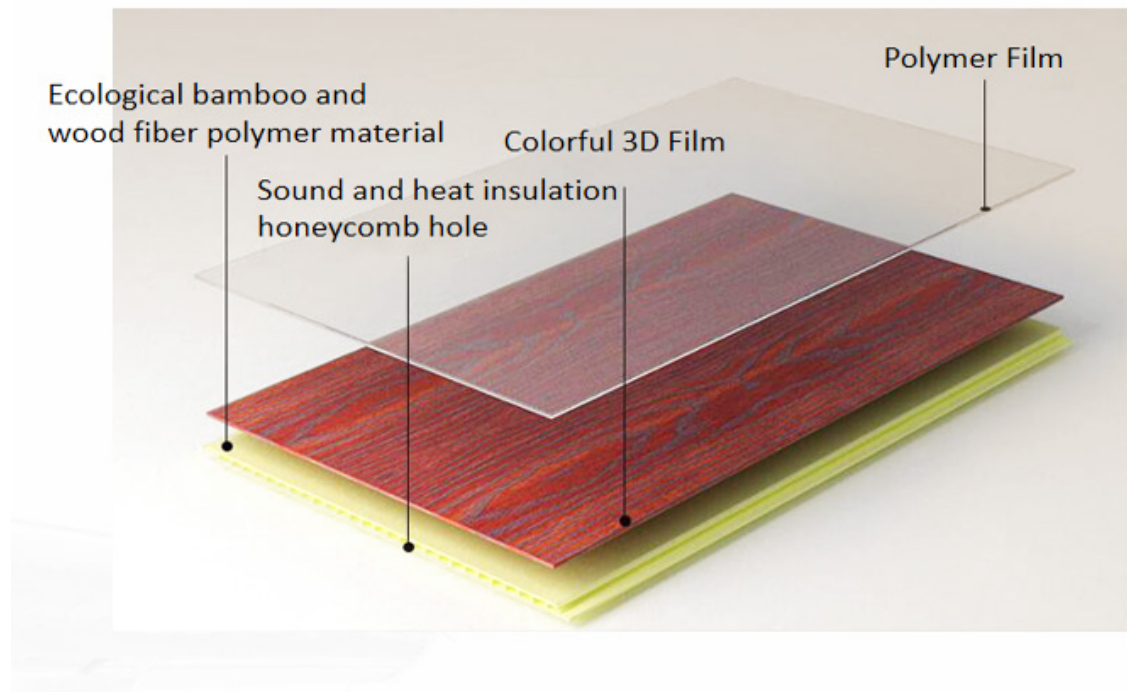
Innovative, new wall application.

Made from fire, stain and water resistant materials. Creating a contemporary or modern look.

Easy and fast to install. No need for special preparation of surface.

Light and economic.

Each piece interlocks with each other to create a seamless joint.

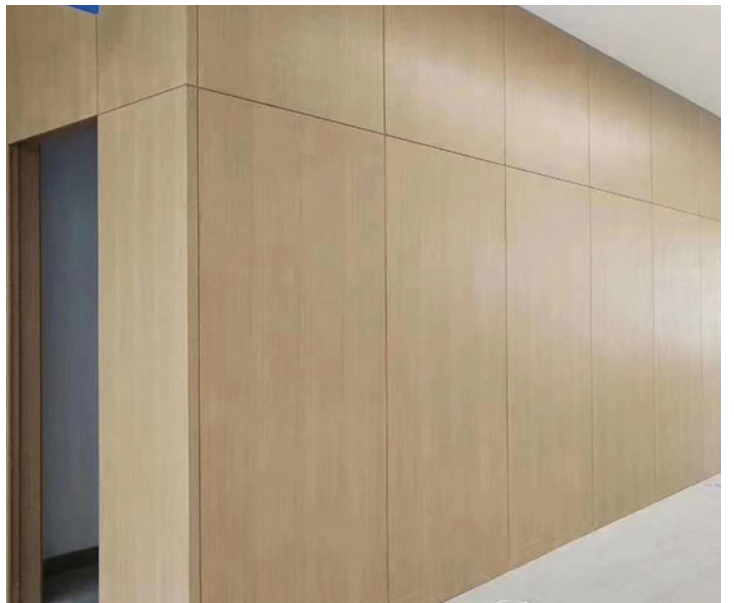


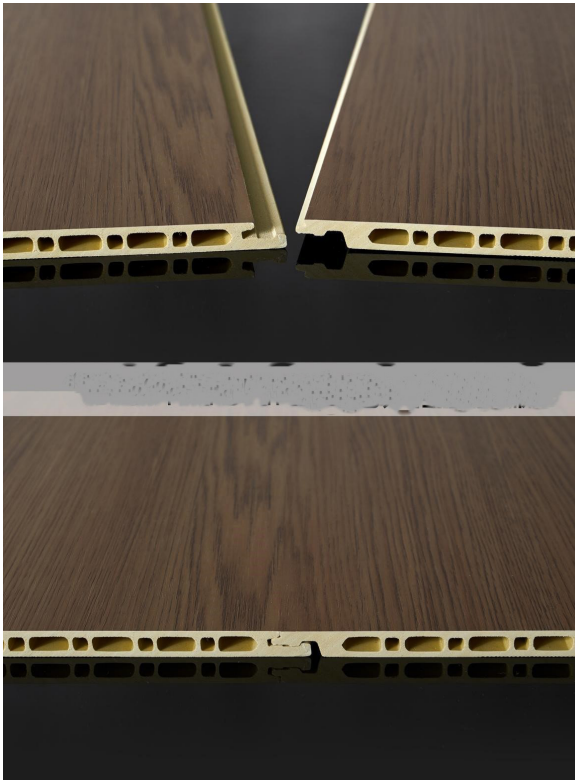
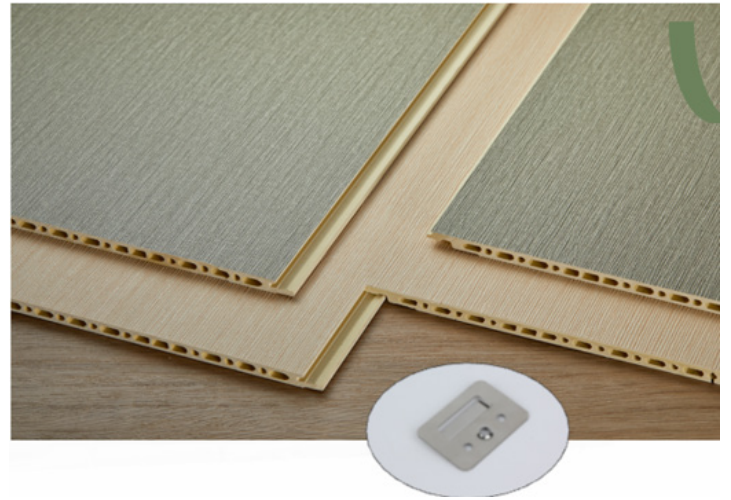
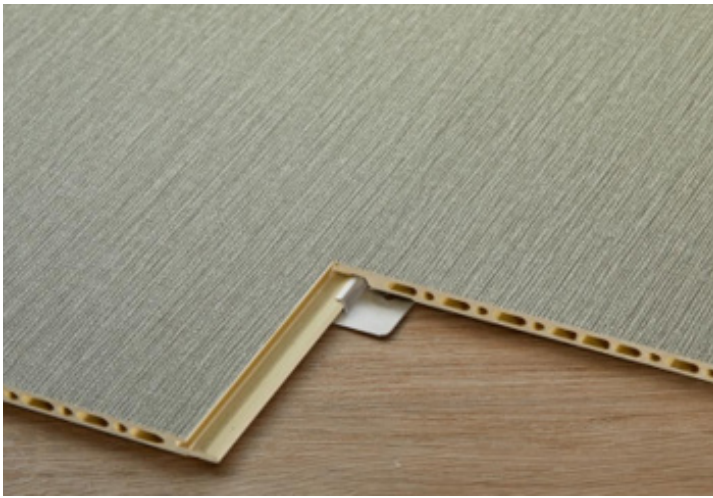
Seamless Panels

Made of Bamboo and wood fiber mixed with resins. Big size panels and seamless joints make this panel the ideal to cover walls and ceilings due to the light weight, easy to cut and attach to walls. The hollow structure gives additional strength and reduces weight. All panels are covered with a resistant film with many colors, textures, designs and more.



Modified bamboo wood fiber mixed with high molecular polymers.





Uses:

Residential and commercial indoors only.
living rooms, TV wall, bedrooms, lobby,
hotel, retail stores, restaurants, fireplace, and
more.

Advantages:

Can be installed over previous flat finishes, old paint,
wallpaper, tiles, unfinished walls, etc.

Installation is very fast and easy.

High of panels is 110", no need for joints on regular
high ceilings. With the seamless interlocking on the
width, no visible joints.

Can create a combination of shapes and 3D.





Birch



Mahogany



Featherstone



Denim



Taupe



Pearl

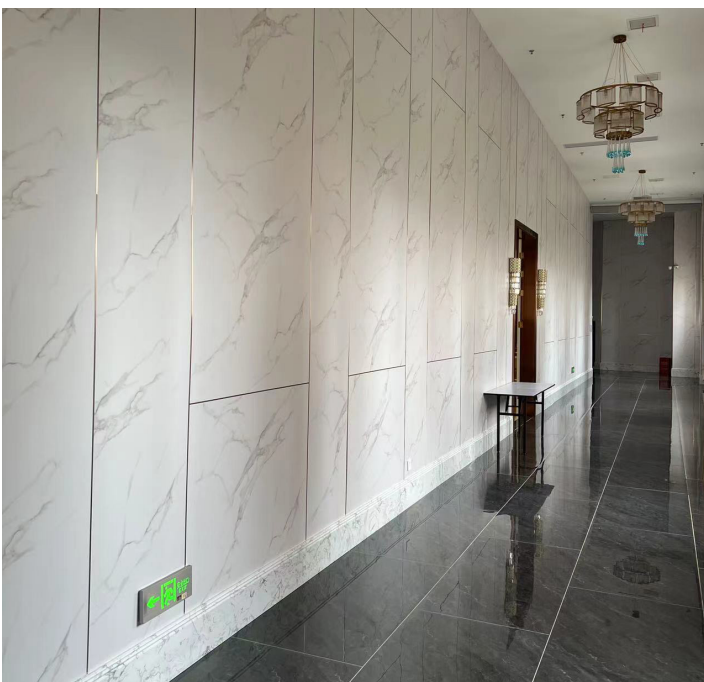


Arabescato

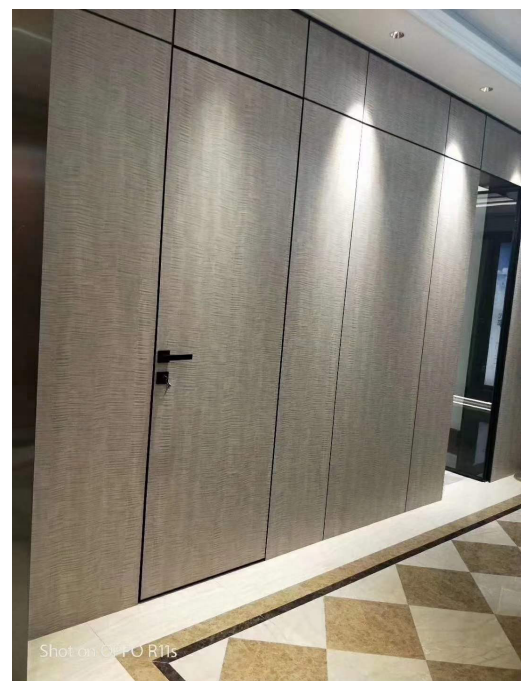


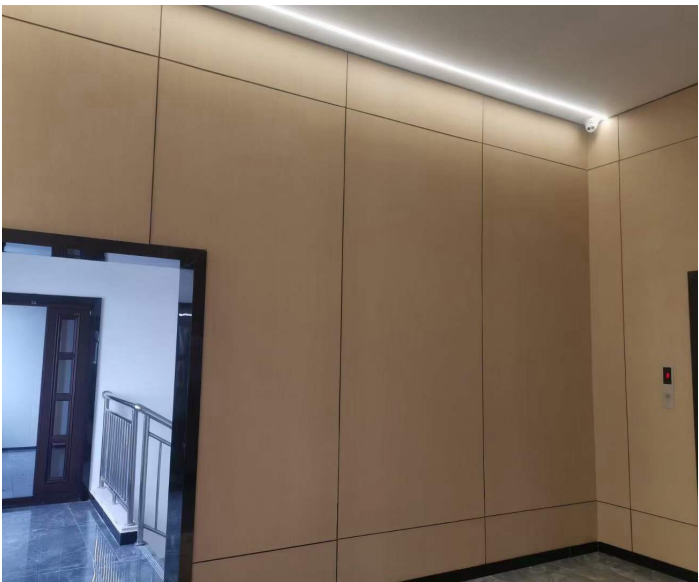
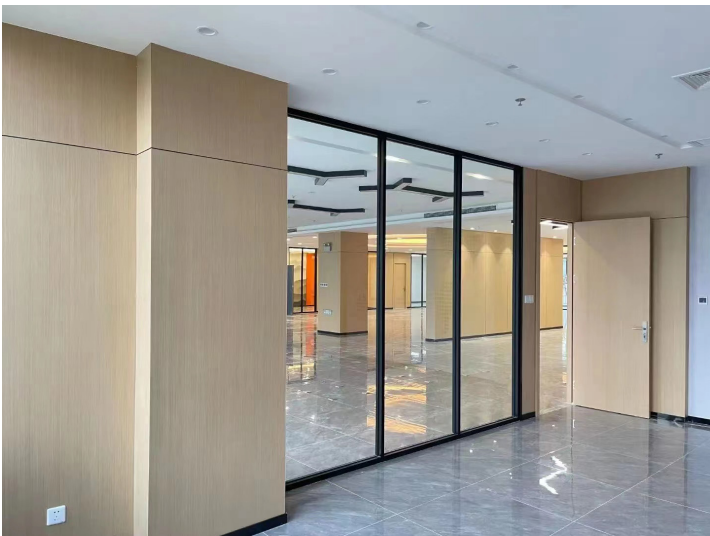
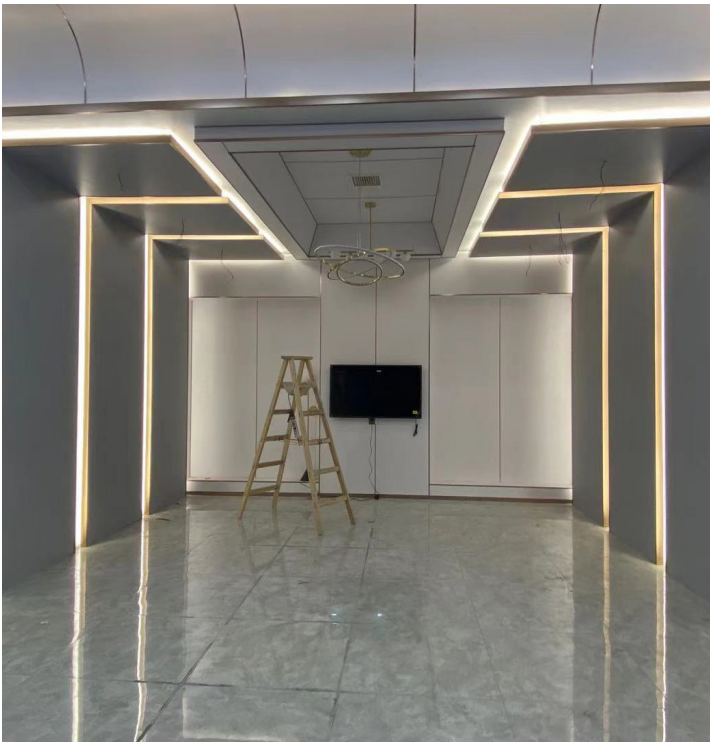
Nero

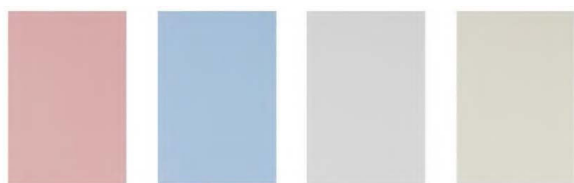
Available Colors and Textures in stock



Combine with other wall finishes.







VJ-CH01

VJ-CH02

VJ-CH03

VJ-CH04

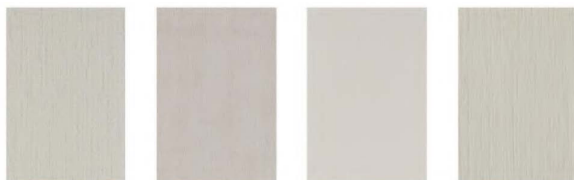


VJ-CH05

VJ-CH06

VJ-CH07

VJ-CH08



VJ-WH07

VJ-WH10

VJ-WH14

VJ-WH22



VJ-WH23

VJ-WH24

VJ-WH25

VJ-WH26



VJ-MZ02

VJ-MZ03

VJ-MZ06

VJ-MZ10



VJ-MH01

VJ-MH02

VJ-MH03

VJ-MH05



VJ-MH15

VJ-MH16

VJ-MH17

VJ-MH18



VJ-MH19

VJ-MH20

VJ-MH21

VJ-MH22



VJ-CZ01

VJ-CZ03

VJ-WH01

VJ-WH02

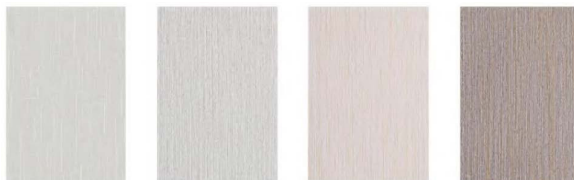


VJ-WH03

VJ-WH04

VJ-WH05

VJ-WH06

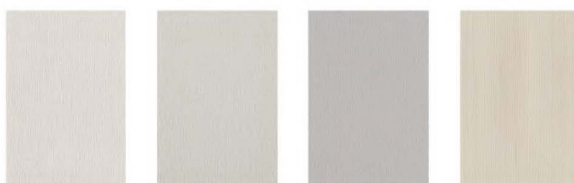


VJ-WZ08

VJ-B124

VJ-B126

VJ-B127



VJ-1501

VJ-1502

VJ-2102

VJ-3005



VJ-MH07

VJ-MH08

VJ-MH09

VJ-MH10



VJ-MH11

VJ-MH12

VJ-MH13

VJ-MH14



VJ-MH23

VJ-MH24

VJ-MH25

VJ-MH26

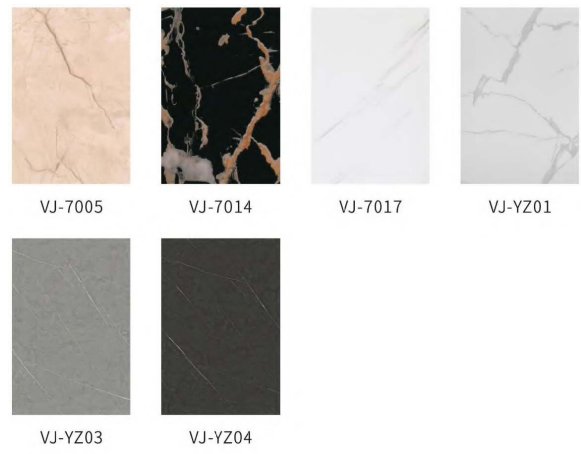


VJ-MH27

VJ-MH28

VJ-MH29

VJ-2028



Color and textures options on special order only

Specifications:

Size of panel: 16x110"

Thickness: 3/8"

Water Resistant

Fire Resistant

Uses:

Indoor application. Walls, ceilings, Family Room, bedrooms, Fireplace, and more.

Commercial or Residential.

Installation:

Panels are solid and strong due to the composition of the materials used to produce these panels.

Can be installed over a flat unfinished wall. No need for major repairs of existing wall.

- 1- Measure and cut slabs accordingly to the wall.
- 2- Cut any openings for electric, water fixtures or other openings.
- 3- Apply PU structural glue on the back of panel evenly along the surface. Attach to wall.
- 4- Place special clips and screw to wall for additional adherence.

Maintenance:

Use a damp cloth or a mild soap as necessary.

Contact:

Call us or send message for more information:

954-964-7606 954-674-8745

marketing@stonetek.us

www.stonetek.us